

**⚠ WARNING** Before playing this game, read the Xbox 360 Instruction Manual and any peripheral manuals for important safety and health information. Keep all manuals for future reference. For replacement manuals, see [www.xbox.com/support](http://www.xbox.com/support) or call Xbox Customer Support

### **Important Health Warning About Playing Video Games**

#### **Photosensitive Seizures**

A very small percentage of people may experience a seizure when exposed to certain visual images, including flashing lights or patterns that may appear in video games. Even people who have no history of seizures or epilepsy may have an undiagnosed condition that can cause these “photosensitive epileptic seizures” while watching video games.

These seizures may have a variety of symptoms, including lightheadedness, altered vision, eye or face twitching, jerking or shaking of arms or legs, disorientation, confusion, or momentary loss of awareness. Seizures may also cause loss of consciousness or convulsions that can lead to injury from falling down or striking nearby objects.

Immediately stop playing and consult a doctor if you experience any of these symptoms. Parents should watch for or ask their children about the above symptoms—children and teenagers are more likely than adults to experience these seizures. The risk of photosensitive epileptic seizures may be reduced by taking the following precautions: Sit farther from the screen; use a smaller screen; play in a well-lit room; and do not play when you are drowsy or fatigued.

If you or any of your relatives have a history of seizures or epilepsy, consult a doctor before playing.

# TABLE OF CONTENTS

Welcome to Rapture	2
Controls	3
Weapons	4
ADAM	5
Plasmids	5
Switching Between Weapons and Plasmids	6
Gene Tonics	6
Heads Up Display	7
Main Menu	7
Getting Help	7
Xbox LIVE®	8
Rapture	8
Character Growth	11
Machines	12
Pause Menu	16
Options	16
Status Menu	17
Hacking	18
Credits	20
Warranties	26
Product Support	29

# WELCOME TO RAPTURE

OPPORTUNITY AWAITS

I'm Andrew Ryan and I'm here to ask you a question:  
Is a man not entitled to the sweat of his own brow?

No, says the man in Washington. It belongs to the poor.

No, says the man in the Vatican. It belongs to God.

No, says the man in Moscow. It belongs to everyone.

I rejected those answers. Instead, I chose something  
different. I chose the impossible. I chose...

# RAPTURE.

A city where the artist would not fear the censor. Where the scientist  
would not be bound by petty morality. Where the great would not  
be constrained by the small. And with the sweat of your brow,  
Rapture can become your city as well.

# CONTROLS



## Reference Table:

BUTTON	FUNCTION	BUTTON	FUNCTION
	Move		Fire Plasmid
	Look		Switch Weapon (Hold to Activate Selection Radial)
	Reload		Fire Weapon
	Jump		Toggle Crouch
	Use First Aid		Toggle Zoom
	Interact		Status Menu
	Change Ammo		Pause Menu
	Switch Plasmid (Hold to Activate Selection Radial)		

# WEAPONS

As you progress through the city of Rapture, exploration and events will yield weapons that will help you survive. To fire your current weapon press **RT**.

## Weapon Switching

As you acquire more weapons, you can easily switch back and forth quickly by using **RB**. Pressing **RB** once will cycle to the next weapon in your arsenal. Holding **RB** will pause the game and bring up a selection radial of all weapons that you currently hold. You can use **L** or **R** to choose your desired firearm which will be equipped upon release of **RB**.



## Ammo

With the exception of the Wrench, each weapon has 3 different ammo types – 1 standard ammo type and then 2 more powerful ammo types that have specific benefits. For example, the Pistol has standard bullets, Armor Piercing Bullets and Anti-Personal Bullets. Try out different ammo as each one has its own special uses within Rapture. Use **O** to change ammo on your current weapon.



## Weapon Upgrading

Each weapon can be upgraded twice using Power to the People machines found in the world. Think carefully on your upgrade choice as only one upgrade can be made at each Power to the People machine. Once the upgrade is made, the machine closes permanently. On the plus side, the upgrades are free.

# ADAM

With the world's best and brightest scientists together at the bottom of the sea with no constraints, it was only a matter of time until the population made a number of breakthroughs. The defining breakthrough was ADAM. Generated by a deep sea parasite when it attached to a host, the parasite produced new stem cells healing the host. The new stem cells allowed the host to take on external genetic modifications that take over their normal cell structure (like cancer). These genetic modifications ranged from medical cures to pure vanity changes. The genetic modifications eventually become more militant in nature. The instant genetic modifications of Rapture come in two flavors: Plasmids and Gene Tonics.

# PLASMIDS

Now that you are trapped in Rapture, you must adapt and use Plasmids in order to escape the decaying city. Plasmids actively change or affect the world around you. To fire your current Plasmid press **LT**.

## Plasmid Switching

You can have multiple Plasmids equipped at the same time. Cycle through the plasmids you have equipped using **LB**. Holding **LB** will pause the game and bring up a selection radial of all equipped plasmids. You can use **L** or **R** to choose your desired plasmid. The game will unpause after you release **LB**.



## EVE

Plasmids are powered by EVE – a serum that gives you the power to use them. If you have no EVE, you cannot use your Plasmids. EVE can be restored through the use of EVE hypos which can be found scattered through Rapture as well as being

purchased at Vending Machines (see Vending Machines, page 13). Some food and drink items can also give you small amounts of EVE when consumed.

### Plasmid Slots

You begin the game with two open Plasmid slots. Each slot allows you to equip a single Plasmid, so use them carefully. Additional slots can be obtained by collecting more ADAM (see Gatherer Gardens, page 12).

## SWITCHING BETWEEN WEAPONS AND PLASMIDS

Once you have both a weapon and a Plasmid equipped, you will find that combat will dictate a quick switch between the two more often than not. Switching is easily achieved by simply pressing the opposite bumper or trigger from what is currently equipped. For example, if you are currently using your Pistol, pressing **LB** or **LT** will switch to the Plasmid you have equipped. Pressing **RB** or **RT** will switch back to the Pistol.

## GENE TONICS

Gene Tonics give you enhanced passive abilities, and come in three different flavors. Many, many Gene Tonics have been developed and it's your choice how they will best serve you in your time in Rapture.

### Physical Gene Tonics

Boost your body's natural abilities in incredible ways. For example, certain Gene Tonics might make you resistant to specific types of damage or let you naturally process toxins.

### Engineering Gene Tonics

Enhance your intellect and dexterity to allow you to carry out delicate tasks like hacking into and bypassing Rapture's security system.

### Combat Gene Tonics

Improve your reflexes and strength to boost your combat skills. For example, some combat gene tonics may increase the damage you can deal with a melee weapon or improve your effectiveness with electrical based attacks.

## HEADS UP DISPLAY (HUD)



## MAIN MENU

### Continue

Continue playing a previous game. This option loads the most recent save game.

### New Game

Select to start a brand new BioShock game and choose from one of three variations of difficulty.

- **Easy** – Novice gamer or new to shooters
- **Medium** – Experienced shooter player
- **Hard** – Veteran player looking for a challenge

### Load Game

Allows you to load a previous saved game and resume your adventure in BioShock.

### Credits

View the credits for the team that brought you BioShock.

## GETTING HELP


BioShock is a deep game with a lot of things for you to discover. Throughout the

game there will be multiple ways to get help in order to fully experience Rapture.



## Adaptive Training

The adaptive training system will remind you about features of the game that you may have missed. If you find the system is telling you about things you already know about, you can turn it off in the Options Menu (see Options, page 16).

## What Is This?

Looking closely at an item will trigger the "What Is This?" prompt. You can bring up the "What Is This?" help message by pressing . This will give you information on that specific item. You can review these help messages at any time by accessing the Status Menu (see Status Menu, page 17).

## Hints

By pressing  on the Status Menu (see Status Menu, page 17) you can get hints on your current goal. These hints will change depending on how much progress you have made in reaching your current objective. Goal hints can also be accessed by holding down right on  when playing the game.

## XBOX LIVE

Play anyone and everyone, anytime, anywhere on Xbox LIVE®. Build your profile (your gamer card). Chat with your friends. Download content at Xbox LIVE Marketplace. Send and receive voice and video messages. Get connected and join the revolution.

## Connecting

Before you can use Xbox LIVE, connect your Xbox 360™ console to a high-speed Internet connection and sign up to become an Xbox LIVE member. For more information about connecting, and to determine whether Xbox LIVE is available in your region, go to [www.xbox.com/live](http://www.xbox.com/live).

## Family Settings

These easy and flexible tools enable parents and caregivers to decide which games young game players can access based on the content rating. For more information, go to [www.xbox.com/familysettings](http://www.xbox.com/familysettings).

## RAPTURE

### Population of Rapture

The citizens of this forlorn underwater city are unique and often grotesque. Below are the primary classes of the Rapture's remaining population. You will encounter variants of these citizens as you progress further in your explorations.

## SPLICERS

The citizenry of Rapture has taken a horrific turn for the worse. Crazed from over-use of Plasmids and Gene Tonics, they have scattered memories of their lives before, but worse for you, they are extremely aggressive towards anyone unfamiliar.

## LITTLE SISTERS AND BIG DADDIES

In addition to the former citizens, an even stranger pair can be found roaming the halls of Rapture: small girls with large syringes can be seen walking the decks. Though they seem vulnerable in this twisted world, they are followed by large protectors in metal diving suits called Big Daddies. You cannot get to the Little Sisters until you deal with the Big Daddy which is no easy task. But deal with them you must, if you want to obtain ADAM from the Little Sisters in order to survive Rapture.

## Exploration

Exploring the world of Rapture is beneficial in many ways. There are many hidden secrets to find and looting the corpses of the city is essential for the resources you need to survive.

## ITEMS

There are many items that can offer health or EVE boosts upon pick up. Money can also be found in many places allowing you to purchase necessary items from Vending Machines.

• First Aid Kits –  
Replenishes  
your Health



• EVE Hypos –  
Restores EVE



• **Autohack Tool** – Allows you to instantly succeed in any hack (see Hacking, page 18).

### DIARIES

Diaries can be found throughout Rapture. Diaries are audio messages left by the citizens of Rapture. Some diaries give you information critical to your progress (the game helpfully identifies these with a golden glow). Other diaries simply help you to understand what happened to this once great city or give you clues to hidden secrets.

### Security

Rapture is full of machines programmed to provide airtight security.

### CAMERAS

There are cameras placed everywhere, constantly looking for intruders. If a camera spots you, it will sound a warning tone. If you stay in its sight long enough for it to identify you, it will sound the alarm, summoning one or more Security Bots. Alarms will time out (a counter will show you how much time remains) but the security system will keep sending bots as long as the alarm is active.



### TURRETS

The recent military activity has left many automated Turrets throughout the decks that are still active when confronted by an intruder. These machines are often deadly but surprisingly can be used to your advantage if you can get close enough to hack them (see Hacking, page 18). Be careful though, the turret should be disabled before attempted the hack. A number of Gene Tonics and Plasmids were developed to help people circumvent the Security system in a variety of ways.



## CHARACTER GROWTH

### ADAM and the Little Sisters

ADAM is the lifeblood of Rapture (see ADAM, page 5). With it, more and more Plasmids and Gene Tonics can be “spliced” (integrated into your genetic make-up). If you are going to survive in Rapture, you will need to splice as many Plasmids as you can. Unfortunately, the ADAM can now only be found within the Little Sisters who roam the halls of Rapture, recycling ADAM from corpses under the watchful eye of the Big Daddies. Using long syringes, they drain blood from the bodies and then drink it to recycle the ADAM.

The only way to get a Little Sister is through the Big Daddy. If you can defeat him, you will have to choose how to deal with the Little Sister. You can Harvest the ADAM from her, a dangerous process that risks her life, or you can Rescue the Little Sister by killing the parasite inside her that enables her to process ADAM. You will be able to extract some ADAM from this parasite, but not as much as if you had harvested the ADAM directly. Nothing is free in Rapture and even this choice has a cost.

If you do not collect and spend ADAM, the game can get extremely difficult. If you have failed to collect ADAM from Little Sisters on earlier levels you can return to those levels at any time to tackle the Big Daddies.

Once you have acquired some ADAM, you can use it in any of the Gatherer’s Garden machines found throughout Rapture (see Gatherer Gardens, page 12).

### Researching Rapture’s Inhabitants

Another significant source of character growth is through researching the inhabitants of Rapture using the camera. During your adventure in Rapture, you may come across a special research camera that the law enforcement of the city used to learn the abilities of people who had spliced a lot of plasmids.

You can use this camera to take photos of the people and security elements. The camera will rate your photograph and collect data on the enemy. When the camera has learned something, you will be granted bonuses like increased damage versus those enemies or even hidden Gene Tonics! The more photos you take, the quicker you will get the rewards.

The research camera is a significant source of character growth that could be the difference between death and survival.

## MACHINES

There are a number of machines in Rapture that offer invaluable services or resources.

### Gene Banks

Gene Banks are stations that allow you to reconfigure your equipped Plasmids and Gene Tonics. It will show all the Plasmids and Gene Tonics you have collected until that point and allow you to choose which are equipped or not. Unequipped Plasmids and Tonics are kept in storage for later retrieval at any other Gene Bank.



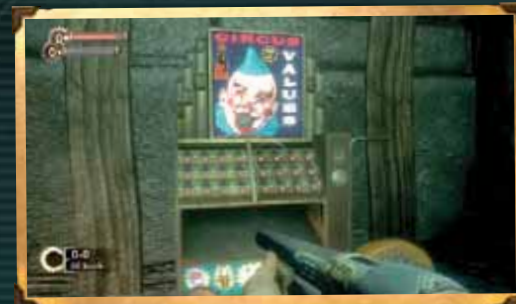
### Gatherer Gardens

These machines take ADAM and can be used to purchase more Plasmid or Gene Tonic slots, to increase your maximum Health or maximum EVE, or even to acquire new Plasmids and Gene Tonics.



### Vending Machines

These machines are full of resources for you to purchase such as ammunition, First Aid kits and EVE hypos. Vending Machines can also be hacked, which will give you discounted prices on the available items and even open up special items for sale.



### Ammo Banditos

These are ammo-only Vending Machines.



## Vita-Chambers

These chambers will revive you if you are ever killed within Rapture. There are usually a couple of them in each area.



## Bot Shutdown Panels

These can be used to deactivate security bots that have been triggered by an alarm. Once shutdown, bots can be hacked to become friendly to the player.



## Health Stations

Health Stations are where you can replenish your health completely - for a price. If you hack a health station, you can get your health filled for a lower price and it will damage any aggressor who uses that machine.



## Power to the People Machines

These allow you to upgrade your weapons. These upgrades are free but each machine will only give one upgrade. Once you have chosen your upgrade, the machine closes permanently.




## U-Invent Machine

These stations allow you to craft new items from the odds and ends you find throughout Rapture. Glue, rubber hoses and screws are just some of the materials you can collect that can be used to create ammo, hacking tools and even Gene Tonics. Most of these items can only be acquired through the U-Invent Machines.





# PAUSE MENU

At any time you can bring up the pause menu by pressing . Here you can view how much money and ADAM you currently have, as well as see how many Little Sisters are left in the current level. Other options while in the pause menu include:

## Resume

Resumes the current game.

## Save

Saves your game progress at the current point. Note that you can save anywhere at anytime. The game will also autosave after loading an area.

## Load

Load a previously saved game.

## View Controls

See the controller layout.

## Adjust Brightness

Change the game's brightness.

## Options

Change game setup and options here, see the opposite for more information.

## Quit to Main Menu

Leave the current game and access the Main Menu.

# OPTIONS

Adjust the current game setup.

## Master Volume

Adjust the overall volume for the game.

## Sound Effects Volume

Adjust the volume for sound effects.

## Music Volume

Adjust the volume for the music.

# Speech Volume

Adjust the volume for the game dialog.

## Difficulty

Change the current difficulty setting.

**Warning:** You can change difficulty at any time, but it may make some Xbox 360 achievements unattainable on that playthrough.

## Adaptive Training

Toggle Adaptive Training messages on/off.

## Art Subtitles

Toggle subtitles for signs and other in-game graphics.

## Dialog Subtitles

Turn on/off subtitles for in-game dialog.

## Auto-Aim

Toggle auto-aim on/off.

## Invert Y-Axis

Toggle invert on/off.

## Controller Sensitivity

Adjust the controller sensitivity.





## Quest Arrow

Toggle the quest arrow on/off.

## Unlock Framerate

Toggle the framerate cap on/off. Note that this can maximize framerate but may degrade visual quality.

# STATUS MENU

You can access the Status Menu by pressing . The Status Menu has a number of tabs which can be selected with  or by using  and . The tabs in the Status Menu are:

## Map

This tab shows a map of the current level. The map shows your position and the location of your current goal, if known. You can zoom out from your current position in the map by pressing **A**. You can also get a hint on your current goal by pressing **Y**.



## Goals

The Goals tab shows a complete list of your current goals. When you have multiple goals that you could be working on, you can switch which goal is active here by selecting one with **↑** or **↓** and then pressing **A**. Goals that currently can't be worked on cannot be made active.

## Messages

The Messages tab allows you replay any radio messages you've heard or diaries that you've picked up.

## Help

The Help tab organizes all relevant help messages and is a valuable resource for information about many of the game systems and items.

# HACKING

With all the machinery and brilliant minds in Rapture, it's not surprising that someone eventually figured out how to reprogram the machines with Hacking. By successfully redirecting the circuit flow, you can change the current state of the machine. The ability to Hack is present on almost all the machines found in Rapture. Hacking can open locked safes, and can even be used to reprogram the security system to view you as a friend, and your enemies as the intruders to be attacked. If a machine can be Hacked, **X** will appear when you are

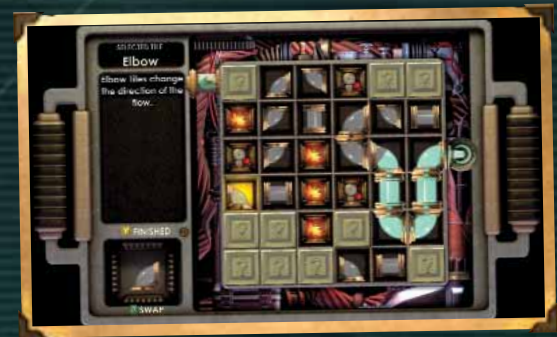
next to the machine. Pressing it will bring you to the Hacking menu that will allow you to evaluate the difficulty of the Hack as well as whether you want to Buyout or use an Autohack Tool to complete (see below).

Hacking can be completed in 3 different ways.

## How To Hack?

During the Hack, the object is to redirect the circuit flow by uncovering tiles and swapping the pipes you need to move the circuit flow to the exit tile on the board. Watch out for hazard pieces that can increase the speed of the circuit fluid, cause an electrical overload, or even sound a security alarm. The benefit of succeeding is that you gain the benefits for free, but the risk of physical damage is high.

If you are finding Hacking is getting very difficult, it is time to spend your ADAM to upgrade your Engineering track with more slots or to purchase more engineering tonics.



## Hacking Buyout

Hacking can also be achieved by paying a premium price. You can spend your money to override the machine. The more difficult the hack, the more money it costs. Splicing Engineering Gene Tonics can reduce the buyout costs.

## Autohack Tool

Finally, if you are lucky, you can find an Autohack Tool that immediately hacks the machine with no issues. When at the hacking evaluation screen press **X** to immediately succeed at the hack with no risk. Autohack Tools are used up in the process.

# CREDITS

## Developed by 2K Boston and 2K Australia

Story, Writing, and  
Creative Direction  
**Ken Levine**

Director of Product  
Development  
**Jonathan Chey**

Project Lead  
**Alyssa Finley**

### Art Team

Art Director  
**Scott Sinclair**

Lead Animator  
**Shawn Robertson**

Acting Environment  
Leads  
**Hogarth De La Plante**  
**Jay Kyburz**

Performance Lead  
**Andrew James**

Animation  
**Grant Chang**  
**Ben Hutchings**  
**Jonathan Mangagil**

Concept Art  
**Scott Sinclair**  
**Mauricio Tejerina**  
**Robb Waters**  
**Nate Wells**

Effects Artist  
**Stephen Alexander**

Level Builders  
**Alex Boylan**  
**Hogarth De La Plante**  
**Jay Kyburz**  
**Christian Martinez**  
**Jamie McNulty**

**Nate Wells**

Modelers  
**Lorne Brooks**  
**Chris Chaproniere**  
**Brendan George**  
**Dan Keating**  
**Chad King**  
**James Sharpe**  
**John Travers**  
**Michael Swiderek**  
**Mauricio Tejerina**  
**Joseph Yang**  
**Laura Zimmermann**

UI Art  
**Ben Shore**

Additional Concept Art  
**Lorne Brooks**  
**Hogarth De La Plante**  
**Daniel Keating**  
**Chad King**  
**Christian Martinez**  
**Shawn Robertson**  
**James Sharpe**  
**Joseph Yang**  
**Laura Zimmermann**

Additional Effects  
**Chad King**

Additional Animation  
**Steve Chao**  
**Ed Lynch**

Additional UI Support  
**Alex Boylan**  
**Jake Etgeton**  
**Christian Martinez**  
**Robb Waters**

**Michael Swiderek**  
**Mauricio Tejerina**  
**Laura Zimmermann**

### Additional Art

**Ray Leung**  
**Eric Lawson**  
**Shaun Stephenson**  
**Steve Kimura**  
**John Torres**  
**Jed Wahl**

### Design Team

Lead Designer  
**Paul Hellquist**  
Lead Level Designer  
**Bill Gardner**

Designers  
**Dorian Hart**  
**Alexx Kay**  
**JP LeBreton**  
**Jonathan Pelling**  
**Dean Tate**  
**Jordan Thomas**

Additional Design  
**Stephen Alexander**  
**Andrew "Ant" Orman**  
**Ed Orman**  
**Ian Vogel**

Additional  
Story/Writing  
**Paul Hellquist**  
**Alexx Kay**  
**Joe McDonagh**  
**Susan O'Connor**  
**Emily Ridgway**  
**Justin Sonnekalb**

Additional Ingame  
Writing  
**Tom Bartlett**  
**Dorian Hart**

Programming Team

Lead Programmer  
**Christopher Kline**

Technical Director  
**Rowan Wyborn**

AI Lead  
**John Abercrombie**

AI/Animation  
Programming  
**Marc Atkin**  
**Darren Lafreniere**

Audio/Streaming  
Programming  
**Carlos Cuello**

Gameplay  
Programming  
**Ian Bond**  
**Dan Kaplan**  
**Lida Tang**

Graphics Programming  
**Jesse Johnson**

UI Programming  
**Jake Etgeton**

Physics Programming  
**Joshua Downer**

Engine  
Development Team  
**Robert Black**  
**Simon Eschbach**  
**Weicheng Fang**  
**Daniel James Lamb**  
**Ryan Lancaster**  
**Mathi Nagarajan**  
**Martin Slater**

Additional  
Programming  
**Karl Burdack**  
**Terrance Cohen**  
**Michael James**

### Production Team

Associate Producer  
**Joe Faulstick**

Assistant Producers

**Kate Kellogg**  
**Keith Shetler**  
**Justin Sonnekalb**

Production  
Assistant/Localization  
**Timothy Crosby**

Additional Production  
Support  
**Tony Oakden**  
**James Sutherland**

### Sound Team

Sound Designer  
**Emily Ridgway**

Sound Assistants  
**Pat Balthrop**  
**Justin Mullins**

Audio Consultant  
**Eric Brosius**

### Quality Assurance

QA Manager  
**Joe Faulstick**  
Assistant Leads  
**Nick Garner**  
**Ryan Oddey**  
**Sara Verrilli**

Testers  
**Tom Bartlett**  
**Kirk Bezio**  
**Ryan Buckley**  
**Matt Cabral**  
**Joe Canadas**  
**Frank DaPonte**

**Jakub (Jake)**  
**Drobowiecki**  
**Chris Enright**  
**Russell Jacobson**  
**Dan Lewis**  
**Casey Malone**  
**Justin Pappas**  
**Mike Pfundt**  
**Jason Silva**

Additional Testing  
**Jason O'Brien**  
**Eric Kirchberg**  
**Brendan Kirk**  
**Justin Sonnekalb**

### Operations Team

Director of Operations  
**Emily Brinkert**

Director of Operations,  
Australia  
**Will Marshall**

IT Manager Australia  
**Gareth Walters**

IT Manager Boston  
**Geoff Graves**

IT Assistants  
**Raymond Holbrook**  
**Justin Richards**

Team Support  
**Phil Frechette**

HR Manager, Australia  
**Ali Hinton**

Operational Support  
**Kate Kellogg**  
**Joe McDonagh**

Office Manager,  
Australia  
**Chelsea Kyburz**

Additional Operational Support

**Devin Bean**  
**Colin Davis**  
**Keri Norris**  
**David O'Toole**

Marketing/PR Support Team

**Joe Faulstick**  
**Joe McDonagh**  
**Nate Wells**

Focus Test Wrangler  
**Tom Bartlett**

Additional Support

**Richard Albon**  
**Shamus Baker**  
**David Beswick**  
**Ben Driehuis**  
**Joakim Hagdahl**  
**Andrew Ley**  
**David March**  
**Jamie O'Toole**  
**Linus Tan**  
**Jarrad Woods**

## 2K Publishing

President  
**Christoph Hartmann**

C.O.O.  
**David Ismaier**

VP Product Development  
**Greg Gobbi**

Development Manager  
**Jon Payne**

Technical Director  
**Tim Perry**

Producers  
**Anthony DeLuca**  
**Melissa Miller**  
**James Daly**

Associate Producer  
**Jason Bergman**

Lead Game Analyst  
**Walt Williams**

Game Analysts  
**Alex Hartpence**  
**Jim Yang**

VP Marketing  
**Sarah Anderson**

Director of Marketing  
**Tom Bass**

Senior Product Manager/Promotions  
**Matt Kassan**

Associate Product Manager/Promotions  
**Alison Moy**

Marketing Coordinator  
**Eric Monacelli**

Director of Public Relations  
**Marcelyn Ditter**

Media Specialist  
**Larry Stephens**

Art Director, Creative Services  
**Lesley Zinn**

Web Manager  
**Gabe Abarcar**

Web Designer  
**John Kauderer**

Community Manager  
**Elizabeth Tobey**

Senior Production Manager  
**Jack Scalici**

Production Manager  
**Lydia Jenner**

Director of Operations  
**Dorian Rehfield**

VP Sales & Licensing  
**Steve Glickstein**

Strategic Sales and Licensing Manager  
**Paul Crockett**

Quality Assurance Director  
**Lawrence Durham**

Lead Tester  
**Angel Gonzalez**  
**Steven D. Allstead, Jr.**

Senior Tester  
**V. Garrett Bittner Jr.**

Quality Assurance Team

**Aaron Adler**  
**Chris Antoine**  
**Dimitri Becerra**  
**Mike Bertuman**  
**Antoine Bohannon**  
**Larry Bolden**  
**Shant Boyatzian**  
**Alex Bujold**  
**Jon Cabrera**  
**Ken Carr**  
**Evan Case**  
**David Clayton-Ready**  
**Stephen Detoma**

**David Dux**  
**Kevin Elefante**  
**Edward Erdelac**  
**Brian Erzen**  
**Raymond Evans**

**Josh Ewing**  
**Chris Flick**  
**Victor Flores**  
**Patrick Garcia**  
**Adam Graziano**  
**Tim Grimaud**  
**Micah Grossman**  
**Paul Herrera**  
**Josh Humphrey**

**Neale Johnson**  
**Jason Jury**  
**Adrin Khachikian**  
**James Kovacs**  
**Lincoln Le**  
**Victor Logan**  
**Andrew Mangialino**  
**Lucas Marsh**  
**Dan McGrew**  
**James McKay**  
**Tony McNeil**  
**Shareef Mendoza**  
**Scott Melzer**  
**Rahim Miller**  
**Darren Miller-Pfeuffer**  
**Christian Murillo**  
**Mark Nelson**  
**Marc Perret**  
**Ella Preger**  
**Jamie Quinones**  
**James Ritchie**  
**Cash Russell**  
**Sergio Sanchez**  
**David Sanders**  
**Steve Santarpia**  
**Jeremy Schulze**  
**Reema Shadid**  
**Danny Smith**  
**Nick Sporch**  
**Kevin Strohmaier**  
**William Suman**  
**Morgan Thompson**  
**James Titlow**  
**Fred Yun**  
**Liam O'Connell**

Standards Lead  
**Michael Greening**  
Standards Senior  
**Paul Diaz**

Standards Team  
**Cory Bernhardt**  
**Andrew Garrett**  
**Eric Lane**  
**Mike Melody**  
**Matt Newhouse**

**George Soluk**

Night Lead  
**Dan Eguia**

Night Senior Tester  
**Lori Durrant**  
**Derrick C. Flot Jr.**  
**Jason Wilson**

2K International

General Manager  
**Neil Railey**

International Marketing Director  
**Matthias Wehner**

International PR Director  
**Markus Wilding**

International Product Manager  
**Ben Wyer-Roberts**

International PR Manager  
**Karl Unterholzner**

Licensing Director  
**Claire Roberts**

International Marketing Assistant  
**Sam Woodward**

2K International  
Product Development

Development Manager  
**Fernando Melo**

Senior International Producer  
**Daniel Baillie**

International Producer  
**Sajjad Majid**

Localisation Manager  
**Scott Morrow**

External Localisation Teams

**Around The Word**  
**Coda Entertainment**  
**Synthesis International**  
**Srl**  
**Synthesis Iberia**

2K International  
Quality Assurance

QA Manager  
**Chris Rowley**

Functionality Supervisor  
**Domenic Giannone**

Localisation Supervisor  
**Iain Willows**

Mastering Engineer  
**Wayne Boyce**

Lead QA Technician  
**Steve Manners**

QA Technicians -  
Functionality  
**Alex Cox**  
**Michael Bunning**  
**Denver Cockell**  
**Arsenio Formoso**  
**Natalie Holkham**  
**Rob Jenkins**  
**Russell Keawpanna**  
**Ian Moore**  
**Sebastian Belton**

Localisation Project Lead  
**Terryll Garrison**

QA Technicians -  
Localisation  
**Nicolas Adam**  
**Marco Angiuoni**  
**Alessandro Cilano**  
**Adele Dalena**  
**Sebastian Frank**  
**Alessandro Gatti**  
**Beatriz Gonzalez**  
**Pauline Martyn**